

AVAILABLE CONNECTIONS



	75 SERIES	100 SERIES	150 SERIES	200 SERIES
THREADED	1.5" FNPT / FBSP 2" FNPT / FBSP	2" FNPT / FBSP 2.5" FNPT ¹	Use FI Adapter (Nelson Flange x Threaded)	Use FI Adapter (Nelson Flange x Threaded)
FLANGE	2" ANSI/DIN Compatible Nelson ² Euro ³	2" ANSI/DIN Compatible ¹ Nelson ^{1,2} Euro ^{1,3}	3" ANSI/DIN Compatible Nelson ² Euro ²	4" ANSI/DIN Compatible ⁴ Nelson ² Euro ²

Notes:

1. Not available on SRNV100
2. Includes gaskets and bolts
3. Includes gasket only
4. Available on SR200 and F200HD only; standard F200 use Nelson x ANSI adapter kit #12807

ADAPTERS

Convert the connection on an existing sprinkler to a new style/size

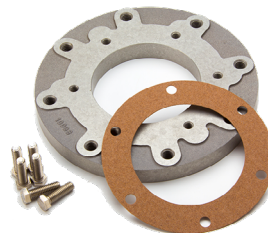
ADAPTER	75 & 100 SERIES	150 SERIES	200 SERIES
Big Gun/Valve Combo ANSI Flange, Threaded	2" FNPT - #10356 2" FBSP - #12940	3" FNPT - #13233-001 3" FBSP - #13233-002	-
FI Adapter Nelson x Threaded	2" FNPT - #6860 2" FBSP - #7050 2.5" FNPT - #7040 2.5" FBSP - #7051	3" FNPT - #8403-001 3" FBSP - #8820 3.5" FNPT - #6621-000 3.5" FBSP - #6621-001 4" FNPT - #9127	4" FNPT - #9127
Nelson x ANSI Flange Adapter	-	-	#12807 (F200 Only)
ANSI Conversion Kit (replace threaded connection with ANSI flange)	2" ANSI compatible - #10415-001	-	-



Big Gun/Valve Combo ANSI
Flange, Threaded



FI Adapter
Nelson x Threaded

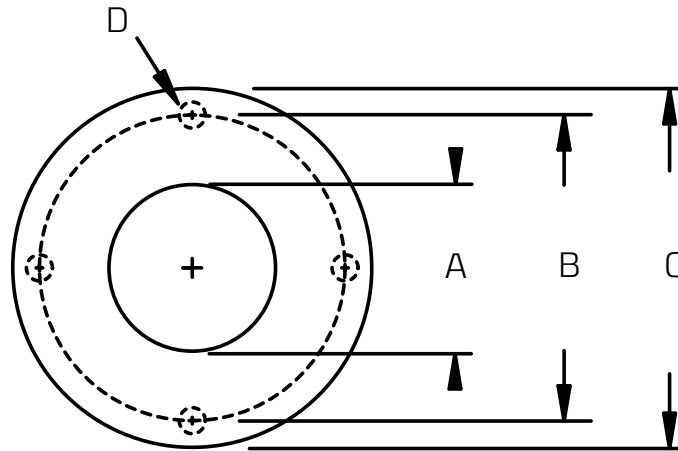


Nelson x ANSI
Flange Adapter



ANSI Conversion Kit

BIG GUN® FLANGE BOLT PATTERNS



	A Flange I.D.	B Bolt Circle Dia.	C Flange O.D.	D Bolt Hole	Bolts
75 & 100 Series (2" Nominal Flange)					
Nelson	2.32" (59 mm)	4.0 (102 mm)	4.6" (117 mm)	6 x 5/16"-18 UNC 2B, Threaded Through	6 x 5/16"-18 Bolts
ANSI/DIN Compatible ¹	2.32" (59 mm)	4.62" (117 mm)	5.72" (145 mm)	4 x 1/2"-13 UNC 2B, Threaded Through	4 x 1/2"-13 Bolts
Euro ¹	2.32" (59 mm)	5.12" (130 mm)	5.72" (145 mm)	6 x 9.1 mm hole, Through Hole	6 x M8 Bolts and Nuts
150 Series (3" Nominal Flange)					
Nelson ²	3.2" (81 mm)	5.75" (146 mm)	7" (178 mm)	6 x 10.3 mm hole, Through Hole	6 x 3/8"-16 or M10 Bolts and Nuts
ANSI/DIN Compatible ³	3.2" (81 mm)	5.88" (149 mm)	6.9" (175 mm)	4 x 1/2"-13 UNC 2B, Threaded Through	4 x 1/2"-13 Bolts
Euro ²	3.2" (81 mm)	5.12" (130 mm)	7" (178 mm)	6 x M8 x 1.25-6H, Threaded Through	6 x M8 x 1.25 Bolts
200 Series (4" Nominal Flange)					
Nelson	4.35" (111 mm)	5.75" (146 mm)	7.6" (193 mm)	6 x 3/8"-16 UNC Thread 0.75" (19 mm) Deep	6 x 3/8"-16 Bolts
ANSI/DIN Compatible ⁴	4.35" (111 mm)	7.74" (197 mm)	8.9" (226 mm)	8 x 1/2"-13 UNC 2B, Threaded Through	8 x 1/2"-13 Bolts
Euro	4.35" (111 mm)	5.12" (130 mm)	7.6" (193 mm)	6 x M8 x 1.25-6H Thread 0.75" (19 mm) Deep	6 x M8 x 1.25 Bolts

Notes:

1. ANSI/DIN/Euro are on one combo flange.
2. Nelson/Euro are on one combo flange.
3. Compatible with: 3" ANSI Class 150; DIN 2573 DN80 PN6; DIN 2576 DN65 PN10; DIN 2543 DN65 PN16; DIN 2502 DN65 PN16 (4 bolt holes); DIN 2503 DN65 PN16 (8 bolt holes).
4. Available on SR200 and F200HD only; for standard F200 specify Nelson flange, then order Nelson x ANSI flange adapter kit #12807 separately. Compatible with: 4" ANSI Class 150; DIN 2503 DN100 PN25 (8 bolt holes).

All standard flanges are aluminum. Contact factory for brass or stainless steel options.